

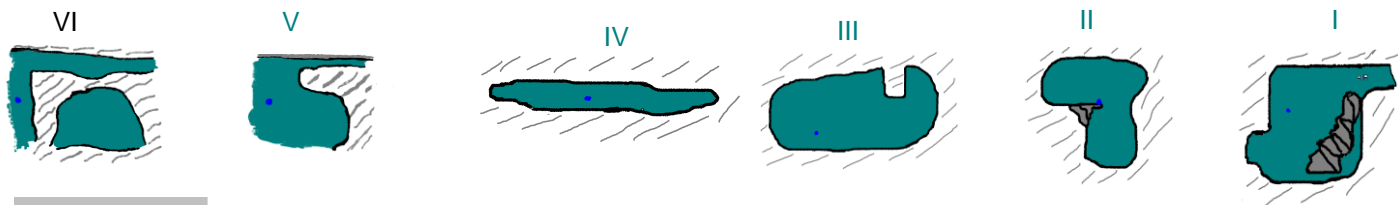
Sistema Chikin Ha

Q.ROO, MEXICO

Cavern & cave entrance

© R.Wylde, F. Devos, 2006

CROSS SECTIONS GOING INTO CAVE



Start of Cavern Line measured using GPS (UTM WGS84)

16 472752E 2266801N

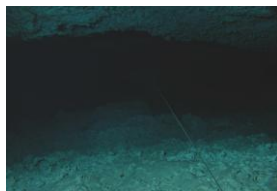
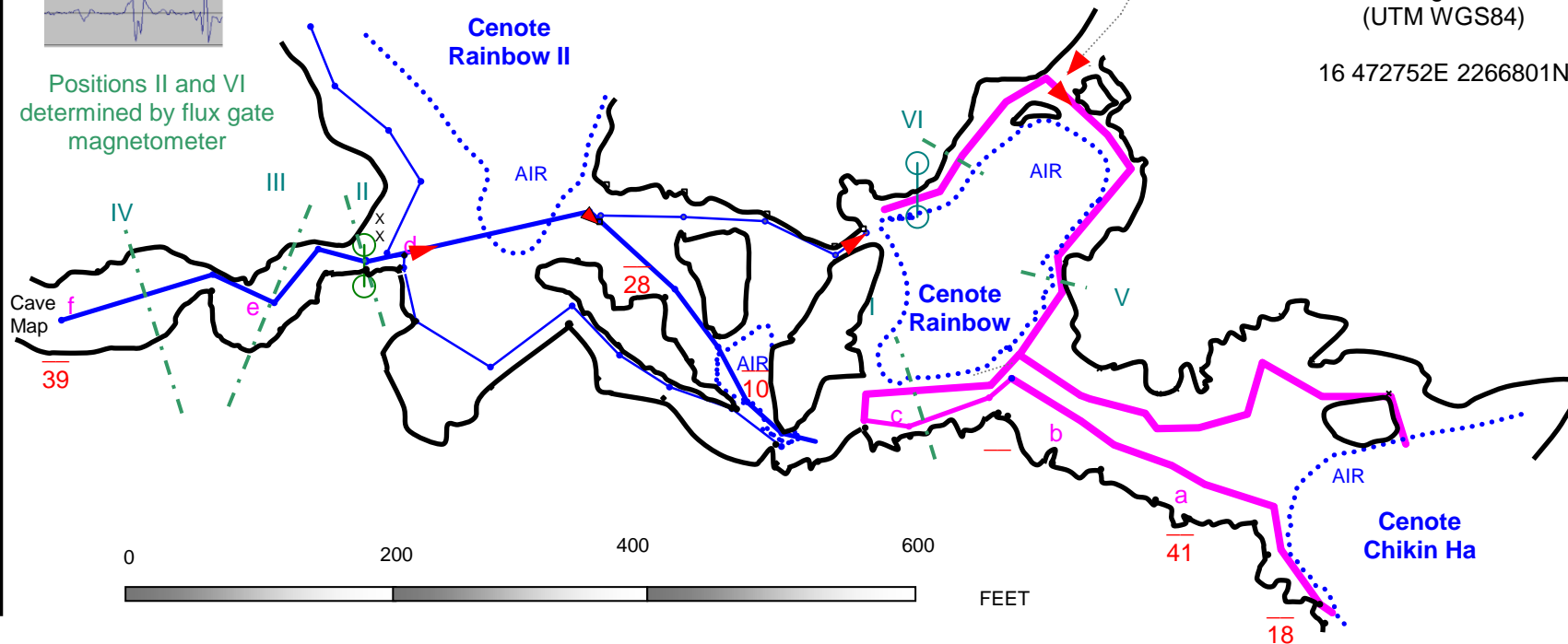


Positions II and VI determined by flux gate magnetometer

SURVEY
Richard Wylde
Fred Devos

Principal Explorers
Bil Philips
Daniel Riordan

MAFIA MAPS™
March 2005 to
March 2006
All depths in Feet.
Depths at line stations



The Anvil [f]



Fruiting Body [e]



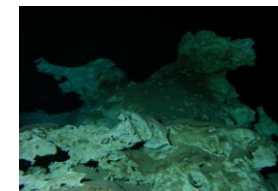
Soda Straws [d]



The Gates [c]



The Promontory [b]



Chinese Dogs [a]